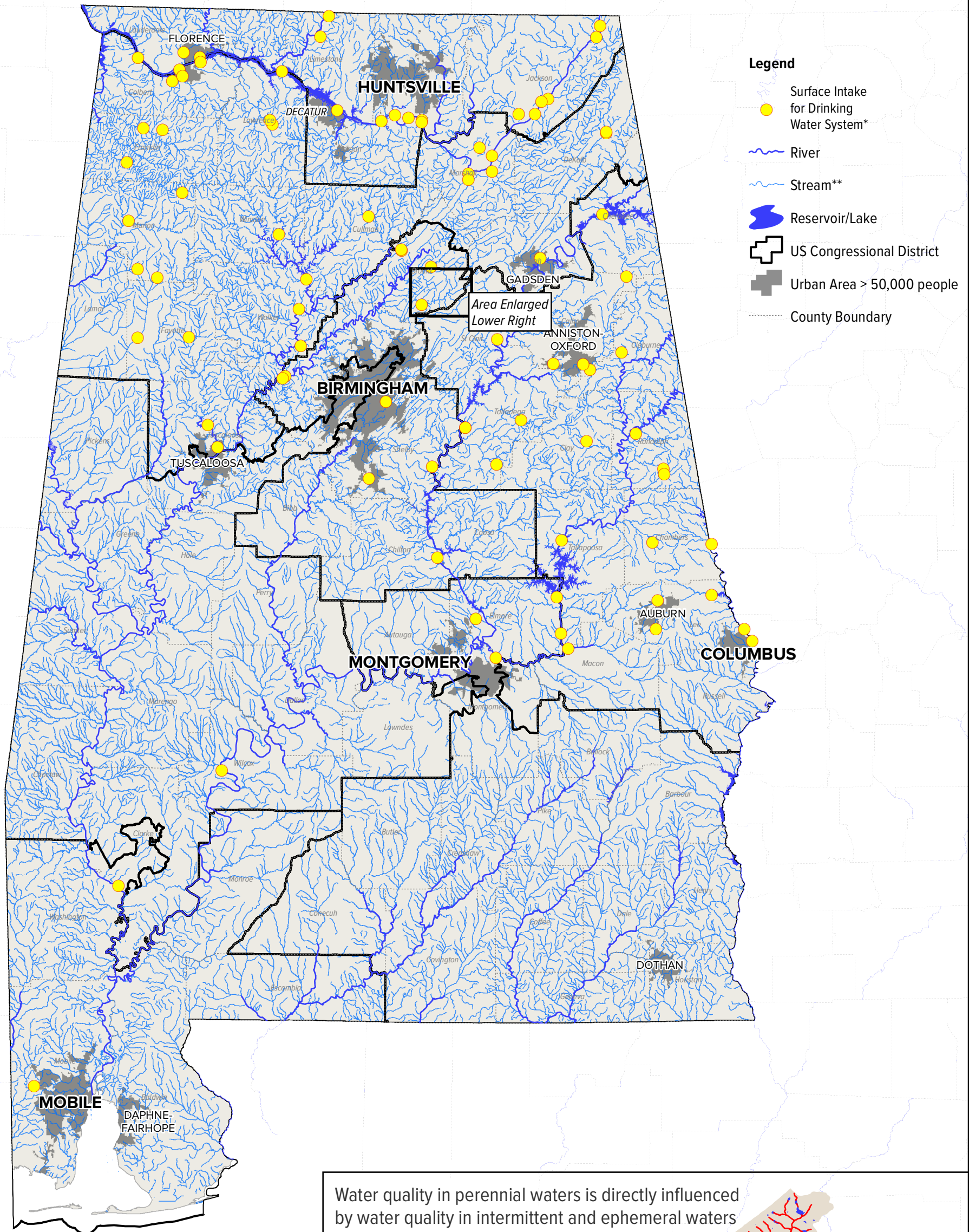


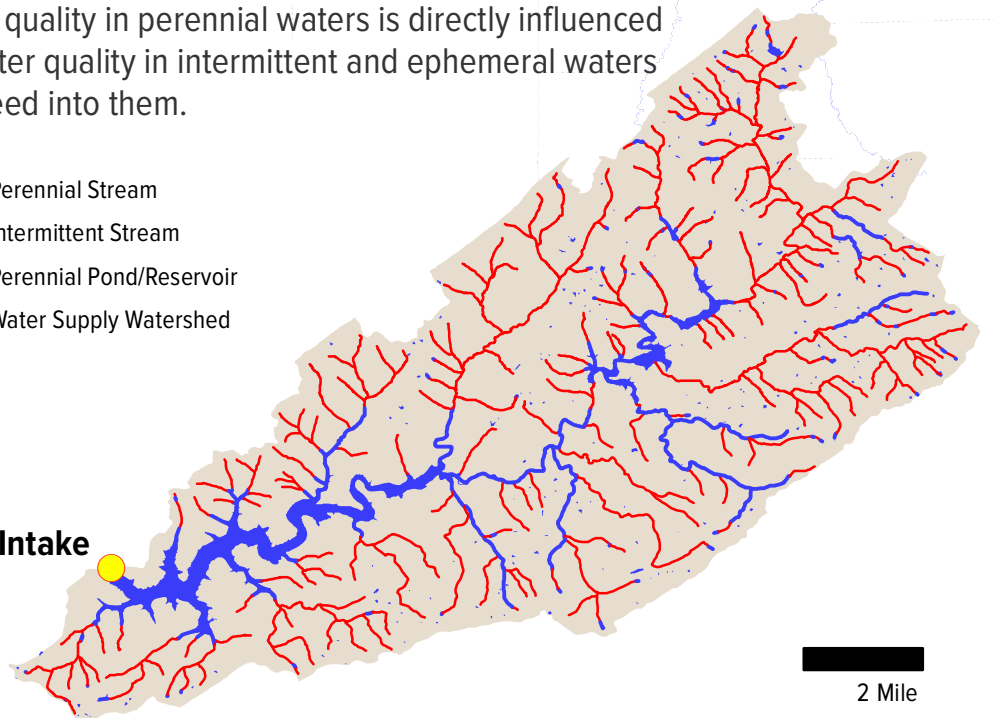
# Surface Drinking Water Intakes for Public Water Supply in Alabama



Water quality in perennial waters is directly influenced by water quality in intermittent and ephemeral waters that feed into them.

- Perennial Stream
- Intermittent Stream
- Perennial Pond/Reservoir
- Water Supply Watershed

Intake



2 Mile

\* = Single drinking water systems can have more than one intake  
 \*\* = Due to scale, only named streams have been shown on this map.  
 Additional unnamed tributaries exist, but cannot be clearly mapped at this scale

Data Sources: USGS; US Census Bureau; EPA; SELC  
 Map created by: Jovian Sackett (jsackett@selcnc.org)  
 Last updated: May 12, 2015

